



## Solaris Shading Systems

by Marietta Drapery and Window Coverings

Solaris shades are designed for ease of use, trouble free maintenance and selective solar control. Solaris shades complement any window with a variety of design options that match almost any decor. Our shade cloths are Greenguard certified, fire retardant (FR) and are available in a wide variety of colors. From complete blackout to a 15% or more openness factor, our shades let in natural light while filtering glare, reducing energy costs, and allowing great views. Solaris shades also come with a 3 year warranty.



**Contact Marietta Drapery at (800) 241-7974 to order samples, request a quote, and learn more.**



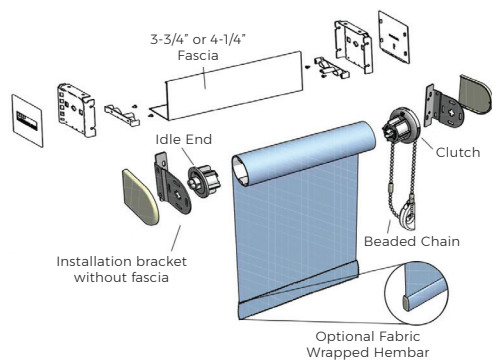
## Feature and Benefits

Solaris shading systems have standard universal brackets which allow them to be inside, outside or ceiling mounted. Optional fascia is available in 5 standard colors: bronze, anodized silver, black, beige, or white. Control chains can be operated from the left or right side and come in heavy duty stainless steel or nickel plated steel, when specified.

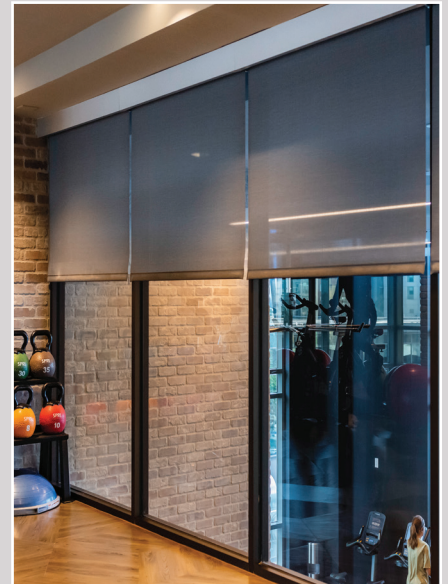
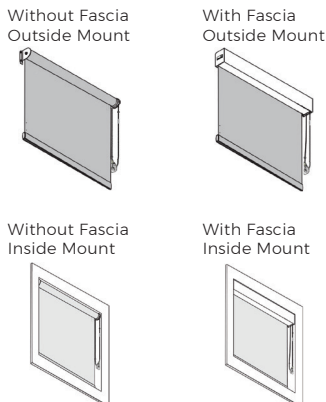
With two standard clutch systems and spring assist for the larger windows, Solaris shades are rated for a variety of window sizes. In addition, the patented fastening system with a secure locking feature and spline attachment for the shade cloth provide secure mounting which ensures that the shade fabric cannot be detached from improper use.

- Greenguard certified meaning they are environmentally friendly with low VOC emissions (air quality)
- Smooth precise operation - quiet, easy to use, and able to stop at any point in the window
- Durability - patented fastening system with secure locking feature on clutch and spline attachment for shade cloth
- Patented universal brackets with spring loaded pin end for ease of installation
- UV stabilized plastics - No fading from sunlight
- 3 Year Warranty
- Versatile design options to match almost any decor - numerous shade cloth colors and openness, various fascia and hem bar options, color coordinated brackets, metal or plastic chains, bracket covers available for outside mount

## Chain Control Operation



## Finished Looks





### PART 1 – GENERAL

#### 1.01 DESCRIPTION

##### A. Related Requirements

1. Meets ANSI WCMA A100-1 2018 Standard for Safety of Cordless Window Covering Products
2. The Conditions of the Contract (General and Supplementary, and other Conditions), and Division 1 General Requirements (if any) are part of this section. (Delete or retain as appropriate.)

#### 1.02 QUALITY ASSURANCE

##### A. Job Mock-Up: (Describe)

#### 1.03 SUBMITTALS

##### A. Manufacturer's Product Data: Submit manufacturer's descriptive product data and installation instructions for each type of shade specified

##### B. Shop Drawings: Submit shop drawings indicating the following:

1. Field-measured dimensions of openings scheduled to receive shades.
2. Illustrations of special accessory components not included in manufacturer's product data.
3. Details of head and sill conditions, corner conditions, and conditions between adjacent shade units.

##### C. Color Sample: Submit samples of material indicating full color range and color variation.

##### D. Product Sample: Submit one 13" x 24" sample shade.

##### E. Maintenance Material (Extra Stock): (Describe)

### PART 2 – PRODUCTS

#### 2.01 SOLAR SHADES

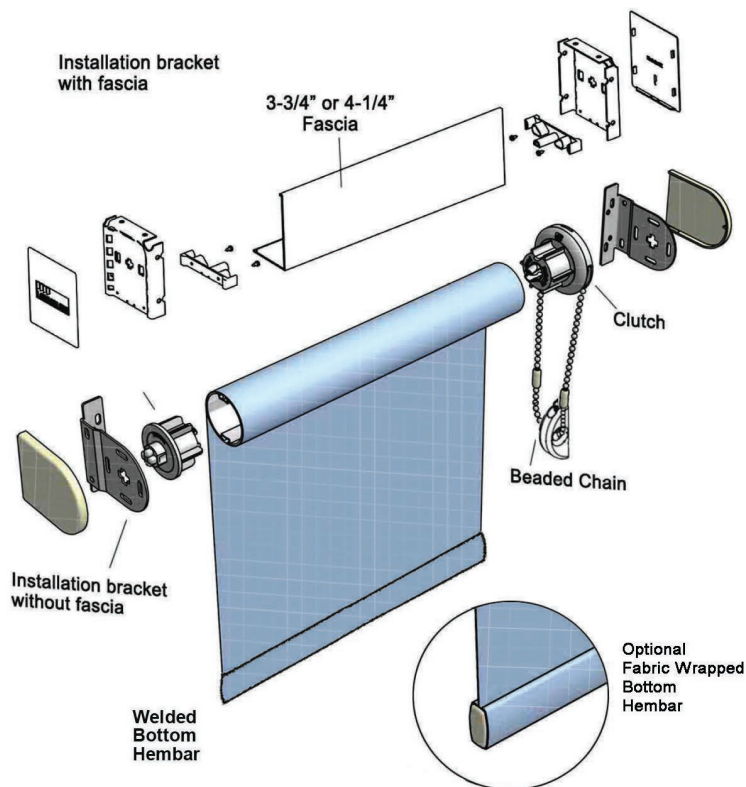
##### A. Manufacturer and Product:

1. **Manufacturer:** Marietta Drapery & Window Coverings Co., Inc.
  - a. **Product:** Solaris Chain Control Solar Shade
  - b. **Options:** (Describe)
  - c. **Color(s):** Selected from Marietta Drapery & Window Coverings Co., Inc. fabric color cards.

##### B. Product Description:

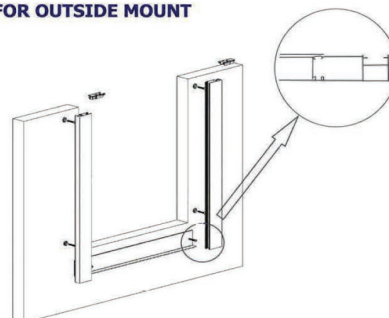
##### 1. Roller Tubes

- a. **Shades up to 98" wide** will use 1 1/2" O.D. aluminum extruded tube with a wall thickness of .050", incorporating two internal locking channels running the length of the tube for added strength and durability.
- b. **Shades over 98" wide** and to 75 square feet will use a 1 3/4" O.D. aluminum extruded tube with a wall thickness of .050", incorporating three internal locking channels running the length of the tube for added strength and durability.

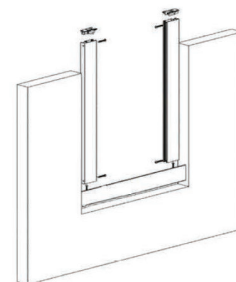


#### SIDE AND SILL CHANNELS

##### FOR OUTSIDE MOUNT



##### FOR INSIDE MOUNT



##### B. Product Description (Cont.):

##### 2. Clutch Systems Available in White, Black, or Beige

- a. **MDC16 Clutch** for use with 1 1/2" tube.
- b. **MDC24 Clutch** for use with 1 3/4" tube.
- c. **Clutch System** is a wrap spring design with high strength acetal and glass filled nylon components. Spring shall be stainless steel and will raise and lower shade by means of a continuous #10 stainless steel chain.

##### 3. Clutch Operation

- a. Will be by means of a continuous #10 stainless steel bead chain providing positive lifting and lowering of the shade. Chain control will be available on either the right or left side of the shade.

#### 4. Idle End

- a. Is made of nylon with a spring steel loaded center pin for smooth and quiet operation. Idle end spring made of zinc plated spring steel. Idle end will be press fit into the tube with ribs that engage with the tube's internal locking channels.

#### 5. Installation Brackets

- a. Without Fascia shall be .060" thick and available in white, black, or beige and shall facilitate side, rear and top mounting applications.
- b. For shades with fascia option, brackets shall measure .065" thick and will facilitate rear and top mounting applications. Brackets are color-coordinated to fascia in White, Silver, Bronze, Beige, and Black.

#### 6. Fabric

- a. Fabric selections are available in a choice of colors in woven coated fiberglass or coated polyester to various patterns with either light filtering openness factors or room darkening capabilities.

#### 7. Bottom Hem

- a. Hem bar shall be of extruded aluminum 1" high by 1/8" thick x width of fabric. Hem bar is inserted into a welded pocket.
- b. Will be extruded aluminum measuring 1 1/4" high by .58" deep with a .050" wall thickness. The room facing side of the hem bar will be fabric wrapped with the fabric secured by a vinyl spline insert at the top and bottom of the bar. The backside of the bar will be either White, Silver, Bronze, or Black with color coordinated injection molded thermoplastic end plugs.

#### 8. Size Limitations:

- a. Maximum shade size with MDC24 clutch is 75 square feet.
- b. Maximum exact width based of fabric width. (Special widths up to 120" available by railroading fabric. In this case maximum length will be governed by standard fabric width.)
- c. Minimum exact width is 12".
- d. Maximum length is 257".
- e. Minimum length is 12".

#### 9. Size Limitations:

- a. 3-3/4 or 4-1/4" Fascia will be extruded aluminum measuring .075" thick, available in White, Silver, Bronze, Beige, and Black. The fascia plate will enclose the roller tube and mounting brackets. The brackets will facilitate rear and top mounting applications. The fascia will be securely attached to the brackets by means of snap in locking channels.
- b. Side Channels - White, Silver, Bronze, Beige, and Black
- c. Sill (L) Channels - White, Silver, Bronze, Beige, and Black

#### 2.02 SOLAR SHADES

- A. Prior to Fabrication, verify actual opening dimensions by on-site measurement. Calculate shade dimensions to fit within specified tolerances.
- B. Fabricate shades to fill openings from head to sill and jamb to jamb. Locate shade divisions at mullions.
- C. Fabricate shades to fill all exterior window openings except at doors, door sidelights and transoms unless noted.

### PART 3—EXECUTION

---

#### 3.01 INSPECTION

Verify that the work area in which the shades will installed is free of conditions that interfere with shade's installation and operation. Begin shade installation only when unsatisfactory conditions have been corrected.

#### 3.02 INSTALLATION

- A. Install shades in accordance with manufacturer's procedure except as otherwise specified herein.
- B. Install shades with adequate clearance to permit smooth operation of shades.
- C. Demonstrate shade to be in smooth, uniform working order.

#### 3.03 CLEANING

- A. Clean soiled shade surfaces with a mild soap solution. Do not use steam, hot water, bleach or any abrasive or solvent-based cleaners
- B. To ensure proper drying, provide adequate ventilation for shades

#### 3.04 SOLARIS SHADE SCHEDULE

Provide shades at the following locations: (listing of shade locations, different options, types, accessories and colors).



### Accommodating Wider Windows

Some fabrics can be turned 90 degrees Clockwise (width for height) to accommodate wider windows.

When displaying multiple shades in the same room, we recommend all shades be ordered with the same fabric orientation for consistent look.

### Size Considerations

The maximum size for a Solaris Manual Shade is 100 Sq. Ft.

Maximum Width – 140"

Minimum Width – 12"

Maximum Length – 257"

Minimum Length – 12"

### Bottom Hem Options

Standard – Welded hem pocket with extruded aluminum bar inserted.

Option – Fabric Wrapped (Room Side) Extruded aluminum bar

Color Options – White, Silver, Bronze & Black.

### Fascia

3.75" & 4.25" extruded aluminum .075" thick

Color options – White, Silver, Bronze, Black & Beige

### Bead Chain Options

Standard bead chain is continuous #10 stainless steel available either on the right or left side

Standard Chain length is 6" less than overall Shade length. Chain can be longer or shorter at no additional charge but must be indicated on the order.

### Roll Orientation

Standard roll orientation is with the fabric coming off the tube closest to the window. Reverse roll is available on shades without fascia only.

# Solaris Roller Shade

## Feature and Benefits

---

### Easy Installation

Spring loaded idle end for ease of installation

### Secure Attachment

Patented Vinyl Spline attachment to the roller tube – ensure fabric is attached to the tube straight.

### Durability

Roller Tubes has internal locking channels the length of the tube for added strength and durability

### Clutch

Smooth Quiet Clutch operation, Secure locking feature on clutch end

### Chain

Stainless steel chain standard, nickel chain is available at no additional charge

### Fascia

3.75" and 4.25" Fascia available – Colors: White, Silver, Bronze, Beige, and Black

### Brackets

Universal brackets for inside, outside, and ceiling applications and Bracket covers available for outside mount or ceiling mount

# Solaris Roller Shades

## Measuring & Ordering Instructions

### Selecting the Type of Mounting:

Determine whether the shade is going to be installed inside the window frame or outside the window frame. We recommend using your shade order form to write down your measurements and notes.

### Inside Mount (IB):

Check window depth and obstructions to see if inside mount is possible.

### Measuring the Width and the Length for Inside Mount:

For the width, measure across the top, middle, and bottom of the window opening. Using the narrowest dimension, measure to the nearest 1/8". By using the narrowest measurement the shade will operate correctly.

For the length, measure the up and down dimension on the left, center, and right side. Use the longest length measurement, measuring to the nearest 1/8".

The factory will make any appropriate deductions. Do not make any width deductions.

### Outside Mount (OB):

Outside mount installation are mounted on the wall, window molding, or ceiling. It is best to overlap the window opening at least 1" on each side when measuring for roller shades.

### Measuring the Width and the Length for Outside Mount:

Measure the area that the shade is to cover. For roller shades it is recommended to overlap the window opening by **at least 1"** on each side for a total of 2". To allow for enough space for the mounting brackets and to cover the bottom of the window. If the window opening has a sill, measure from where the top of the shade will be located to the top of the window sill.

*Note: When outside mount shades are specified, no factory deductions are taken from the outside bracket to outside bracket measurement. There will be a fabric deduction as outlined on page 2.*

### Confirming Measurements:

The most common error in ordering shades is reversing the width and the length measurements. Always confirm that the width is the measurement that goes across from left to right and that the length is the measurement that goes from top to bottom. (W x L)

### Clutch and Bracket Selection:

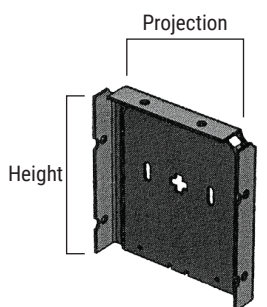
To determine the clutch and bracket size used by the factory for specific shade, refer to your price list.

### Bracket Dimensions:

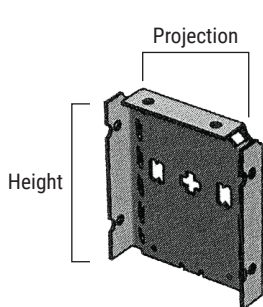
Clutch and Bracket Used	Wall Mount Installation		Ceiling Mount Installation	
	Projection	Height	Projection	Height
System 40 Non Fascia Bracket	2 3/4"	2 7/8"	2 7/8"	2 3/4"
System 45 Non Fascia Bracket	3 1/8"	3 1/4"	3 1/4"	3 1/8"
3 3/4" Fascia Bracket	3 1/4"	3 3/4"	3 1/4"	3 3/4"
4 1/4" Fascia Bracket	4"	4 3/8"	4"	4 3/8"

### For inside mount

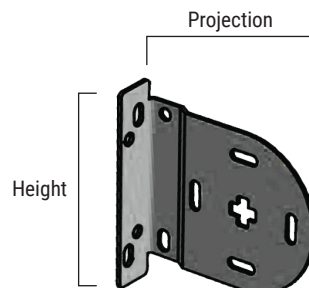
Minimum Depth Needed	Flush Mount Depth Needed
1 1/2"	2 7/8"
1 3/8"	3 1/4"
2 7/8"	3 3/8"
3 3/8"	4 1/8"



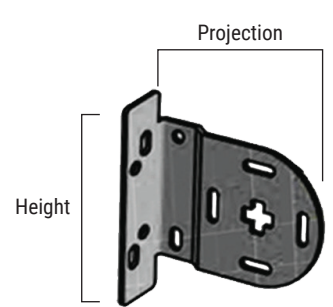
4 1/4" Fascia Bracket



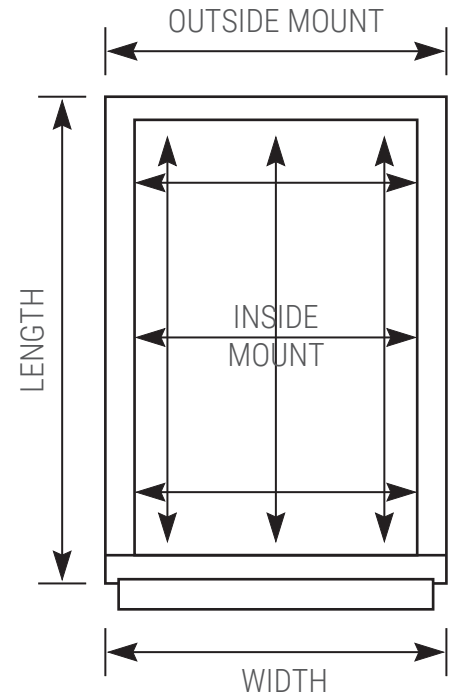
3 3/4" Fascia Bracket



System 45 Non Fascia Bracket



System 40 Non Fascia Bracket



# Solaris Roller Shades

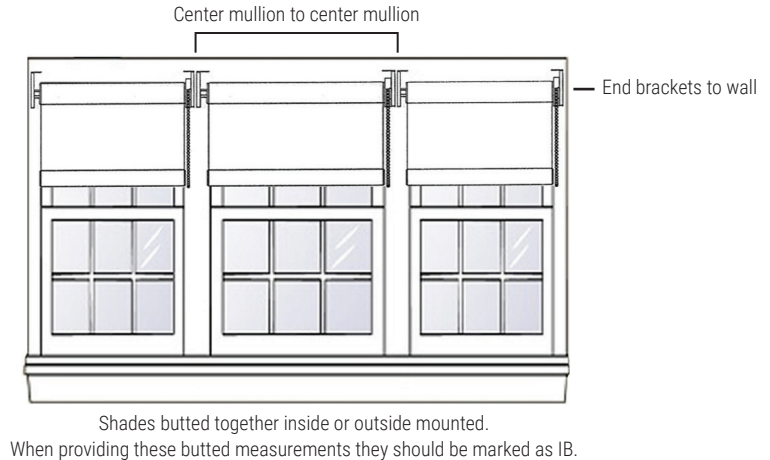
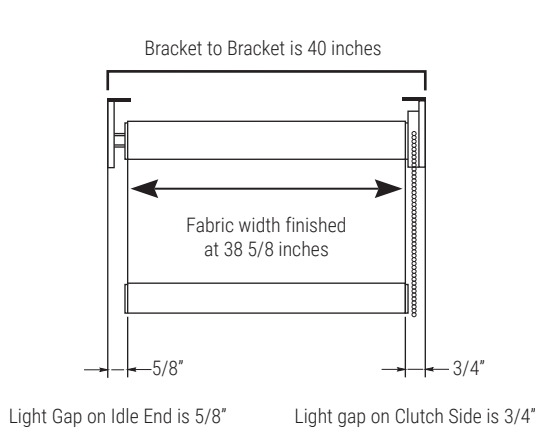
## Measuring & Ordering Instructions

### Critical Information:

**Shade Cloth Deductions & Light Gap:** All Measurements provided should be outside bracket to outside bracket.

It is extremely important to note when measuring for roller shades that the actual width of the shade fabric will be narrower than the width provided. The finished shade cloth width is 1 3/8" narrower than the outside bracket to outside bracket measurement. This 1 3/8" deduction constitutes the width of the shade hardware (i.e. clutch idle end, and brackets). Please note the fabric deductions below taken by the factory on all shades. (IB or OB)

**Inside Mount Deduction:** An additional 1/8" deduction will be taken for shades ordered with or without fascia as an inside mount (IB)



### Shade Measurements: (Critical Note!)

Specify IB or OB measurements for all roller shade orders. Do not provide fabric width measurements. If a specific shade cloth width is required, please refer to the list of shade cloth deductions above and add the required amount to the fabric width. Control position (L or R) needs to be noted on each shade measured.

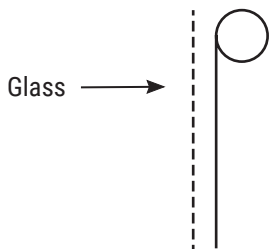
#### Fabric Telescoping & Tracking:

Roller shades that exceed a 3-to-1 length to width ratio where the shade is more than 3 times longer than the width may have problems tracking or rolling up straight. This tracking problem, commonly referred to as telescoping is an inherent characteristic of roller shade fabrics and should be explained to the end user.

### Roll Direction: Regular Roll or Reverse Roll

#### Regular Roll: (Standard)

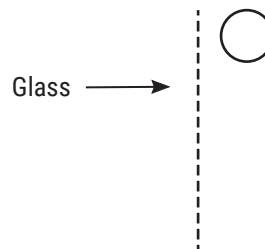
Regular roll shades indicate when the shade fabric rolls off of the back of the roller tube. The shade cloth will be closest to the window with this option.



Regular roll shades are industry standard and yield the highest levels of energy conservation because of the shade's close proximity to the glass.

#### Reverse Roll: (Optional)

Reverse roll shades indicate when the shade fabric rolls off of the front of the roller tube. The shade cloth will be furthest away from the window with this option.



Reverse roll shades are the most commonly used for the following applications. **Fascia is not available with reverse roll.**

- To avoid a window obstruction (door handle, etc.)
- To reduce light gap for corner or bay windows

Taking your shade brackets with you ahead of time to see if they will fit in the area you plan to mount them often saves time and frustration.



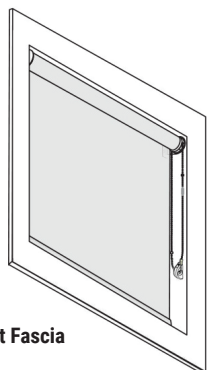
# How To Install

## Inside Mount

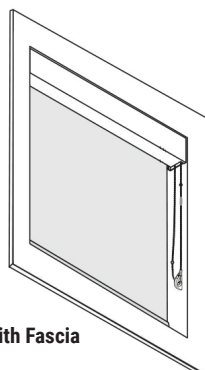


### Finished Looks

Apariencia final



Without Fascia



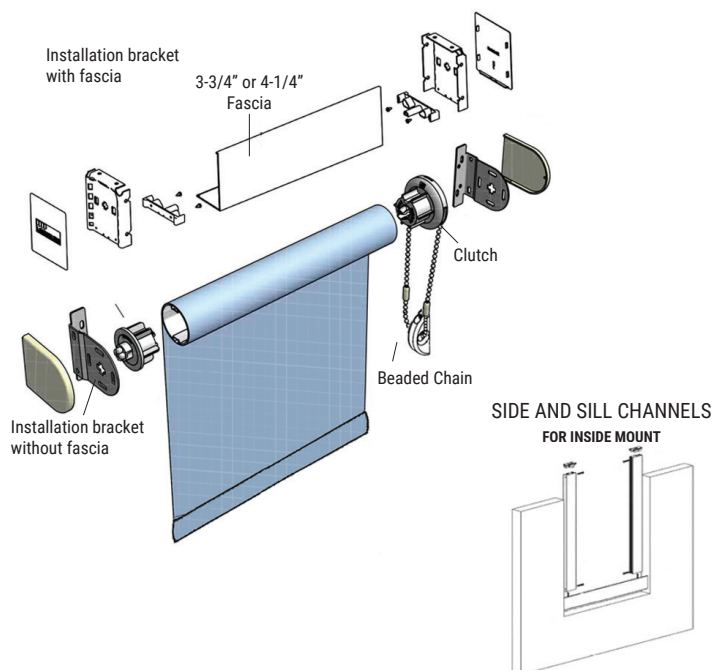
With Fascia

MDC Solaris shades are designed for ease of use, trouble free maintenance and selective solar control. Solaris shades complement any window with a variety of design options that match almost any decor. Our shade cloths are fire retardant (FR) and available in a wide variety of colors. From complete blackout to a 15% or more openness factor, our shades let in natural light while filtering glare, reducing energy costs, and allowing great views. Solaris shades also come with a 3 year warranty.

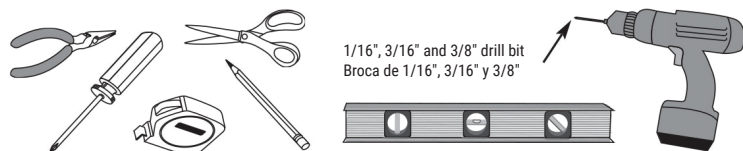
# 1

### Everything needed to install your shade

Toda lo necesario para instalar su cortina



### Tools Needed • Herramientas necesarias



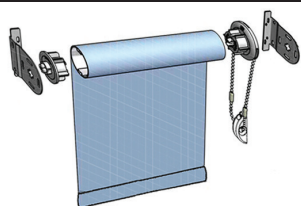
1/16", 3/16" and 3/8" drill bit  
Broca de 1/16", 3/16" y 3/8"

# 2

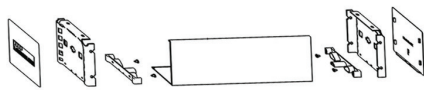
### Identify left and right brackets

Identifique las soportes izquierdo y derecho

#### Without Fascia



#### With Fascia

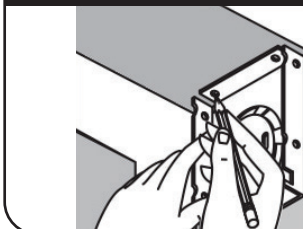


# 3

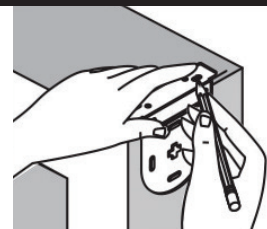
### Mark screw locations

Marque la ubicación de los tornillos

#### With Fascia



#### Without Fascia



# 4

### Drill holes, screw brackets into place

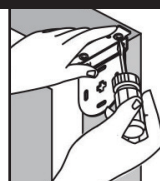
Taladre los agujeros, atornille los soportes en su lugar

#### 1/16" Drill Bit



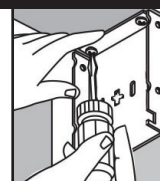
Broca de 1/16"

#### Without Fascia



Non fascia bracket

#### With Fascia



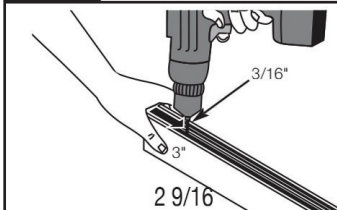
3 3/4" and 4 1/4" box bracket

Chain Guides are provided on both Fascia brackets. Prior to installing the brackets remove the chain guide from the clutch control bracket that is attached with 2 screws. This allows the shade to be inserted into the installed brackets. Reattach the chain guide on the clutch end with the 2 provided screws. When installing shades always insert the idle end first.

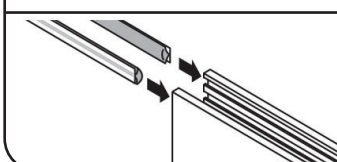
# 5

### Optional: Prepare side/sill channels - "L" bottom sill

Opcional: prepare canales laterales/de alfeizar



Using a 3/16" drill bit, drill through side/bottom of channels, 3" from each end. Space additional holes evenly (see chart).  
Con una broca de 3/16", taladre la parte lateral a la parte inferior de los canales, 7.5 cm (3") para cada extremo. Separe los agujeros adicionales de manera equidistante (véase la gráfica)



Insert mole hair strips and cut to length  
Insert las tires de refuerzo y córtelas al tamaño.



# How To Install

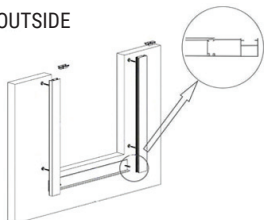
## Inside Mount

### 6

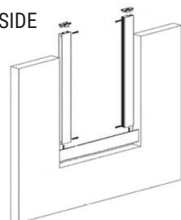
#### Optional: Mount side channels

Opcional: Monte los canales laterales y del alféizar

OUTSIDE



INSIDE



Starting with the side channels, hold channel up, aligned with back of bracket. Using the predrilled holes and a 1/16" drill bit, drill into sill.

Comenzando por los canales laterales, sujete el canal levantado, alineado con la parte posterior del soporte. A través de los agujeros pretaladrados y una broca de 1/16", taladre el alféizar.

Mount side channels. Ensure sill channel fits between.

Monte los canales laterales. Asegúrese de que quepa el canal del alféizar.

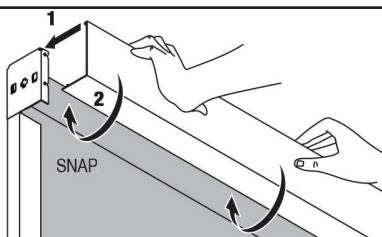
Repeat for sill channel, aligning it between side channels.

Repita la operación para el canal del alféizar, alineándolo entre los canales laterales.

### 7

#### Optional: Install fascia

Opcional: Instale la moldura



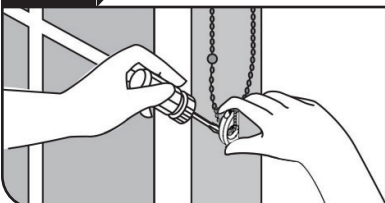
Align fascia over shade and box brackets with cut out placed on same side as chain control. Place top of fascia into top groove of box bracket. Rotate fascia and click into bottom of box bracket.

Alinee la moldura sobre los soportes de la caja y la cortina, con la pieza cortada colocada del mismo lado que la cadena de control. Coloque la parte superior de la moldura en la muesca superior del soporte de la caja. Haga girar la moldura y asegúrela en la parte inferior del soporte de la caja.

### 8

#### Install Chain Guide

Instale la Guía de Cadena



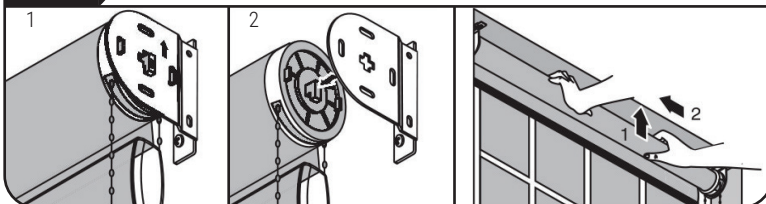
Mount chain guide on the wall, leaving some slack in the chain.

Monte la cadena guía en la pared, dejando cierta holgura en la cadena.



#### Shade removal: if installed, remove fascia

Cómo quitar la cortina: si está instalada, quite la moldura



#### Adjusting shade length

Ajuste de la longitud de la cortina

If the shade does not fully raise, raise the shade as far as the chain will allow. Remove the shade. Roll the shade up completely by hand and reinstall.

If the shade does not fully lower, lower the shade as far as the chain will allow. Remove the shade. Lower to correct window length by hand and reinstall.

Si la cortina no se levanta completamente, levante la cortina lo más que la cadena lo permita. Remueva la cortina. Enrolle la cortina completamente a mano y reinstale.

Si la cortina no baja totalmente, baje la cortina lo más que la cadena lo permita. Remueva la cortina. Bájeela para corregir la longitud de la ventana a mano y reinstale.



#### Cleaning and care

Cuidado y limpieza

This fabric is virtually maintenance free. Only periodic vacuuming and an occasional cleaning using a mild detergent, soft brushing and thorough rinsing is required. Allow shade to dry completely before raising.

Esta tela prácticamente no requiere mantenimiento. Sólo se requiere pasarle la aspiradora de vez en cuando y en alguna ocasión limpiarla con un detergente y un cepillo suaves; luego hay que enjuagarla por completo. Deje que la cortina seque a la perfección antes de subirla.

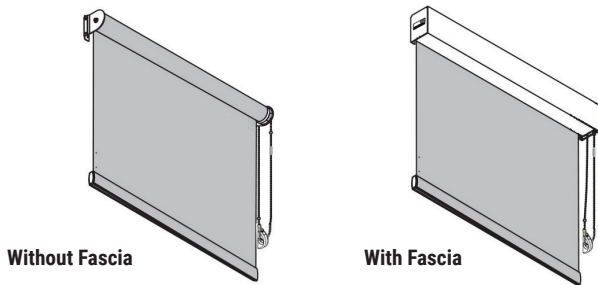
# How To Install

## Outside Mount



### Finished Looks

Apariencia final

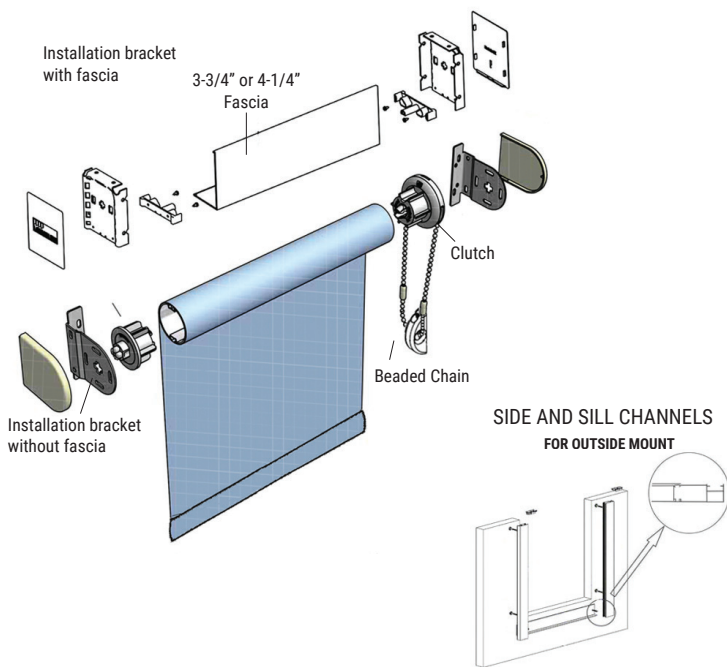


MDC Solaris shades are designed for ease of use, trouble free maintenance and selective solar control. Solaris shades complement any window with a variety of design options that match almost any decor. Our shade cloths are fire retardant (FR) and available in a wide variety of colors. From complete blackout to a 15% or more openness factor, our shades let in natural light while filtering glare, reducing energy costs, and allowing great views. Solaris shades also come with a 3 year warranty.

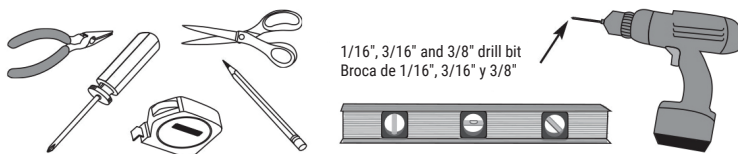
# 1

### Everything needed to install your shade

Toda lo necesario para instalar su cortina



#### Tools Needed • Herramientas necesarias



# 2

### Identify left and right brackets

Identifique las soportes izquierdo y derecho

#### Without Fascia



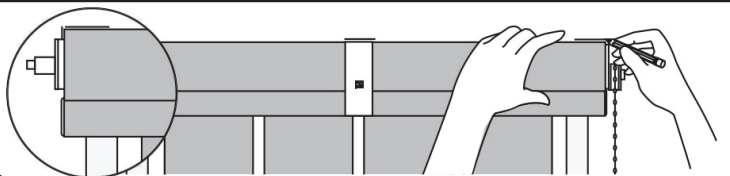
#### With Fascia



# 3

### Center shade above window; mark top and edge of fabric

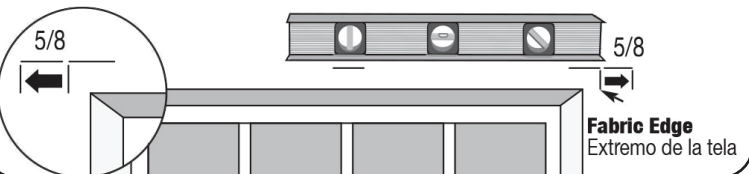
Centre la cortina sobre la ventana; marque por arriba y en el extreme de la tela



# 4

### Mark shade bracket locations; ensure marks are level

Marque la ubicación del soporte de la cortina; asegure que las marcas estén a nivel.

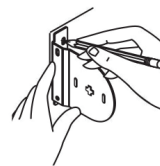


# 5

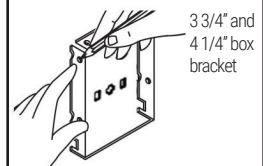
### Mark screw locations; ensure brackets are level

Marque las ubicaciones de los tornillos; asegure que los soportes esten a nivel

#### Without Fascia



#### With Fascia



Align outside of each bracket with marks made in step 4.

Alinee par afuera de cada soporte con las marcas hechas en el paso 4.

# 6

### Drill holes, screw brackets into place

Taladre las agujeros, atornille las soportes en su lugar

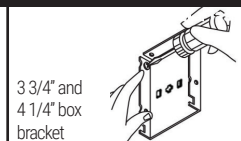
#### 1/16" Drill Bit



#### Without Fascia



#### With Fascia



Chain Guides are provided on both Fascia brackets. Prior to installing the brackets remove the chain guide from the clutch control bracket that is attached with 2 screws. This allows the shade to be inserted into the installed brackets. Reattach the chain guide on the clutch end with the 2 provided screws. When installing shades always insert the idle end first.

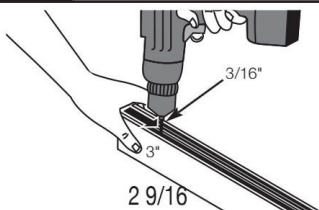
# How To Install

## Outside Mount

### 7

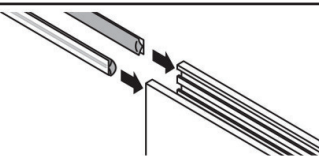
#### Optional: Prepare side/sill channels - "L" bottom sill

Opcional: prepare canales laterales/de alféizar



Using a 3/16" drill bit, drill through side/bottom of channels, 3" from each end. Space additional holes evenly (see chart).

Con una broca de 3/16", taladre la parte lateral a la parte inferior de los canales, 7.5 cm (3") para cada extremo. Separe los agujeros adicionales de manera equidistante (véase la gráfica)



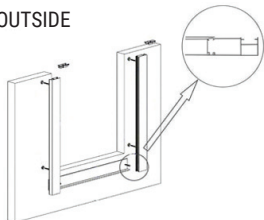
Insert mole hair strips and cut to length  
Insert las tires de refuerzo y córtelas al tamaño.

### 8

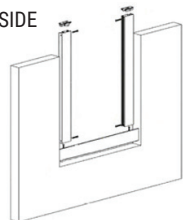
#### Optional: Mount side channels

Opcional: Monte los canales laterales y del alféizar

OUTSIDE



INSIDE



Starting with the side channels, hold channel up, aligned with back of bracket. Using the predrilled holes and a 1/16" drill bit, drill into sill.

Comenzando por las canales laterales, sujete el canal levantado, alineado con la parte posterior del soporte. A través de los agujeros pretaladrados y una broca de 1/16", taladre el alféizar.

Mount side channels. Ensure sill channel fits between.

Monte los canales laterales. Asegúrese de que quepa el canal del alféizar.

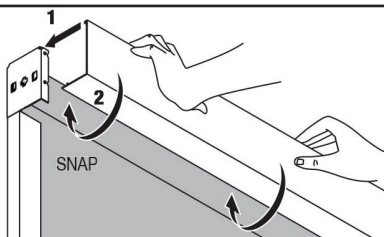
Repeat for sill channel, aligning it between side channels.

Repita la operación para el canal del alféizar, alineándolo entre las canales laterales.

### 9

#### Optional: Install fascia

Opcional: Instale la moldura



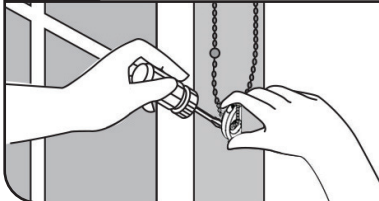
Align fascia over shade and box brackets with cut out placed on same side as chain control. Place top of fascia into top groove of box bracket. Rotate fascia and click into bottom of box bracket.

Alinee la moldura sobre los soportes de la caja y la cortina, con la pieza cortada colocada del mismo lado que la cadena de control. Coloque la parte superior de la moldura en la muesca superior del soporte de la caja. Haga girar la moldura y asegúrela en la parte inferior del soporte de la caja.

### 10

#### Install Chain Guide

Instale la Guía de Cadena



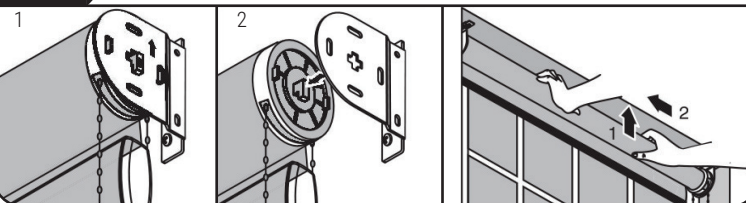
Mount chain guide on the wall, leaving some slack in the chain.

Monte la cadena guía en la pared, dejando cierta holgura en la cadena.



#### Shade removal: if installed, remove fascia

Cómo quitar la cortina: si está instalada, quite la moldura



#### Adjusting shade length

Ajuste de la longitud de la cortina

If the shade does not fully raise, raise the shade as far as the chain will allow. Remove the shade. Roll the shade up completely by hand and reinstall.

If the shade does not fully lower, lower the shade as far as the chain will allow. Remove the shade. Lower to correct window length by hand and reinstall.

Si la cortina no se levanta completamente, levante la cortina lo más que la cadena lo permita. Remueva la cortina. Enrolle la cortina completamente a mano y reinstale.

Si la cortina no baja totalmente, baje la cortina lo más que la cadena lo permita. Remueva la cortina. Bájela para corregir la longitud de la ventana a mano y reinstale.



#### Cleaning and care

Cuidado y limpieza

This fabric is virtually maintenance free. Only periodic vacuuming and an occasional cleaning using a mild detergent, soft brushing and thorough rinsing is required. Allow shade to dry completely before raising.

Esta tela prácticamente no requiere mantenimiento. Sólo se requiere pasarle la aspiradora de vez en cuando y en alguna ocasión limpiarla con un detergente y un cepillo suaves; luego hay que enjuagarla por completo. Deje que la cortina seque a la perfección antes de subirla.



# Solaris Roller Shades

## Warranty

---

Marietta Drapery & Window Coverings Co., Inc. warrants to its direct commercial customer that the Solaris Shade product supplied by Marietta Drapery will be free from defects in materials and workmanship for a period of three (3) years from the date of purchase, provided that such products were and remain properly installed in the original commercial application.

The obligation of Marietta Drapery is limited to repair or replacement of the Solaris Solar Shade or components found to be defective and excludes shipping charges and costs of removal and re-installation. Repairs will be made with like or similar parts.

Warranty claims must be made in writing to Marietta Drapery at the address provided below within 30 days after the discovery of the problem, and in any event within the warranty period. Also, warranty claims must be accompanied by proof of purchase, as well as details regarding the nature of the problem, location of the product, etc.

This warranty does not cover any conditions or damages resulting from misuse or abuse (whether by the customer or by any third party such as guest, invitee, or occupant of the premises), accidents, alterations, exposure to the elements, excessive humidity, fading or discoloration over time, or failure to follow out instructions with respect to measurement, installation, cleaning or maintenance. This warranty also does not cover any condition or damage resulting from removal of the product or re-installation in the same or another window or application, or normal wear tear upon the product. Shades longer than the 3-to-1 ratio are not covered by our warranty and can have the tracking and telescoping issues.

Bead chain is a fail-safe component and is not covered under this warranty.

**THIS WARRANTY IS EXCLUSIVE AND IN LIEU OF ALL OTHER OBLIGATIONS, LIABILITIES, OR WARRANTIES.** In no event shall Marietta Drapery be liable or responsible for **INCIDENTAL OR CONSEQUENTIAL DAMAGES** or for any other direct or indirect damages, loss, cost, expense or fee. Some state do not allow the exclusion or limitation of incidental or consequential damages, so this exclusion or limitation may not apply to you. This warranty gives you specific legal rights, and may also have other rights which vary from state to state.

# Solaris Roller Shades

## Fenestration

---

**The following are definitions of the Fenestration Properties that are listed on the Solaris sample cards.**

Ts - (Solar Transmittance) The percentage of solar energy passing through the fabric

RS - (Solar Reflectance) The percentage of solar energy reflected by the fabric.

As - (Solar Absorptance) The percentage of solar energy that the fabric absorbs.

TV - (Visible Transmittance) The percentage of visible light passing through the fabric. It is related to the amount of glare a person receives through a glazing system.

SC - The percentage of solar heat gain that is transmitted to the interior through the glass and shading system. The lower the # the better the fabric is in preventing solar heat gain transmitted to the interior. The SC percentage is the best criteria in determining which fabric & colors are most energy efficient.

O/F- (Openness Factor) The percentage of open area to the total area of the fabric.

1/8" CL= 1/8" Clear Glass

1/4" CL= 1/4" Clear Glass

1 / 4" HA = 1 / 4" Heat Absorbing Glass